



GOLDEN *Residences*

BY GRATEROL SANTOS DEVELOPMENTS

Located in the charming vicinity of Aveiro, next to Farmácia Peixinho and Clínica de São Bernardo, our development offers a unique opportunity to live in harmony with nature without sacrificing modernity.

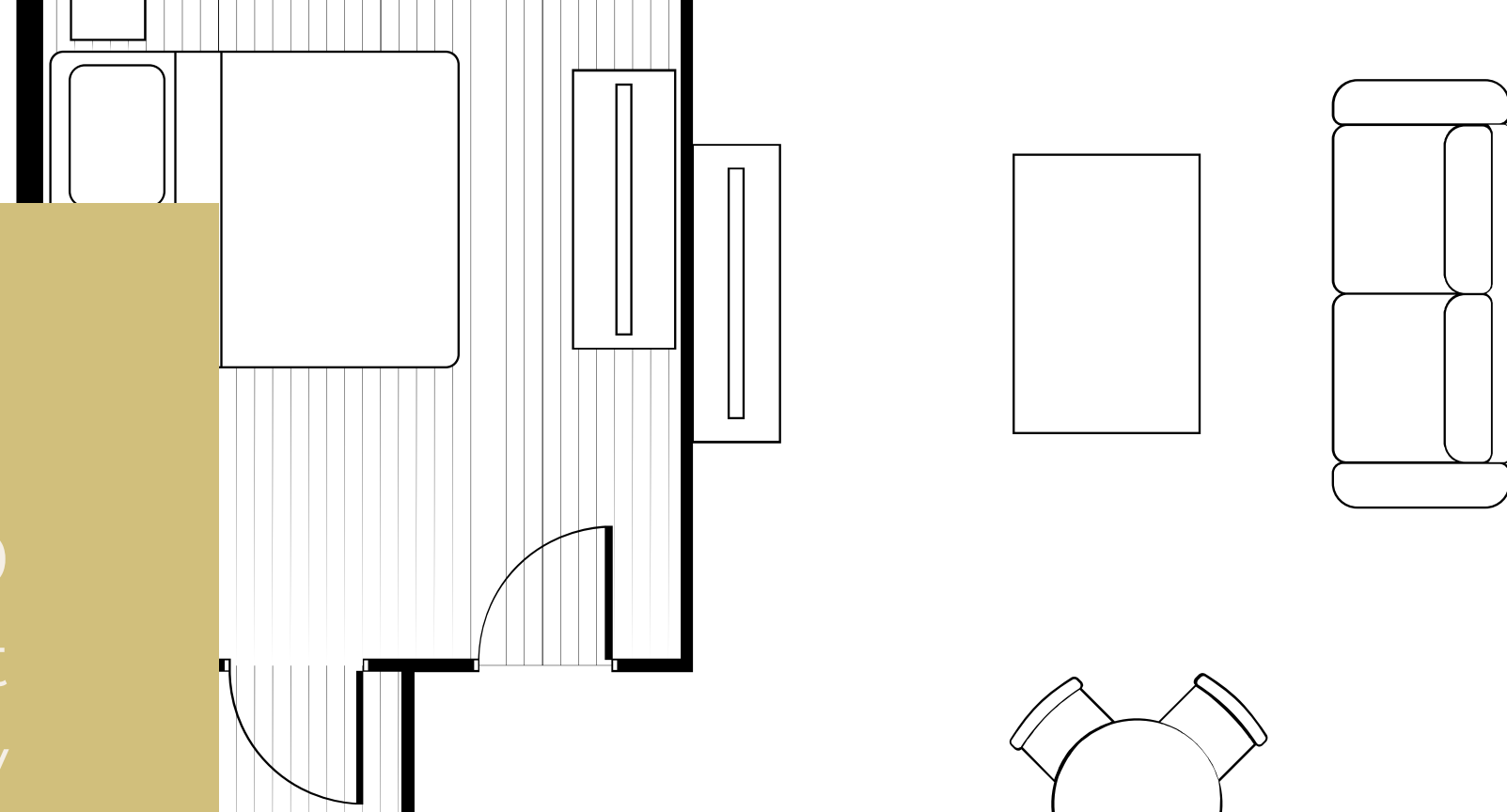
With contemporary architecture, the properties have been designed to provide comfort and style, making the most of natural light.



With T1, T2 and T3 typologies between 100 and 320 square meters (m²), GOLDEN RESIDENCES stands out for the excellence of its finishes, using high quality materials, both inside and outside, including balconies and closed garages.

Just 10 km away, and with easy access to public transport, you can explore Aveiro's famous canals, take trips on traditional moliceiro boats and enjoy the local cuisine, including the irresistible soft eggs.

Address: Rua Dos Aires Lacerda, 3810-211 São Bernardo.



planning

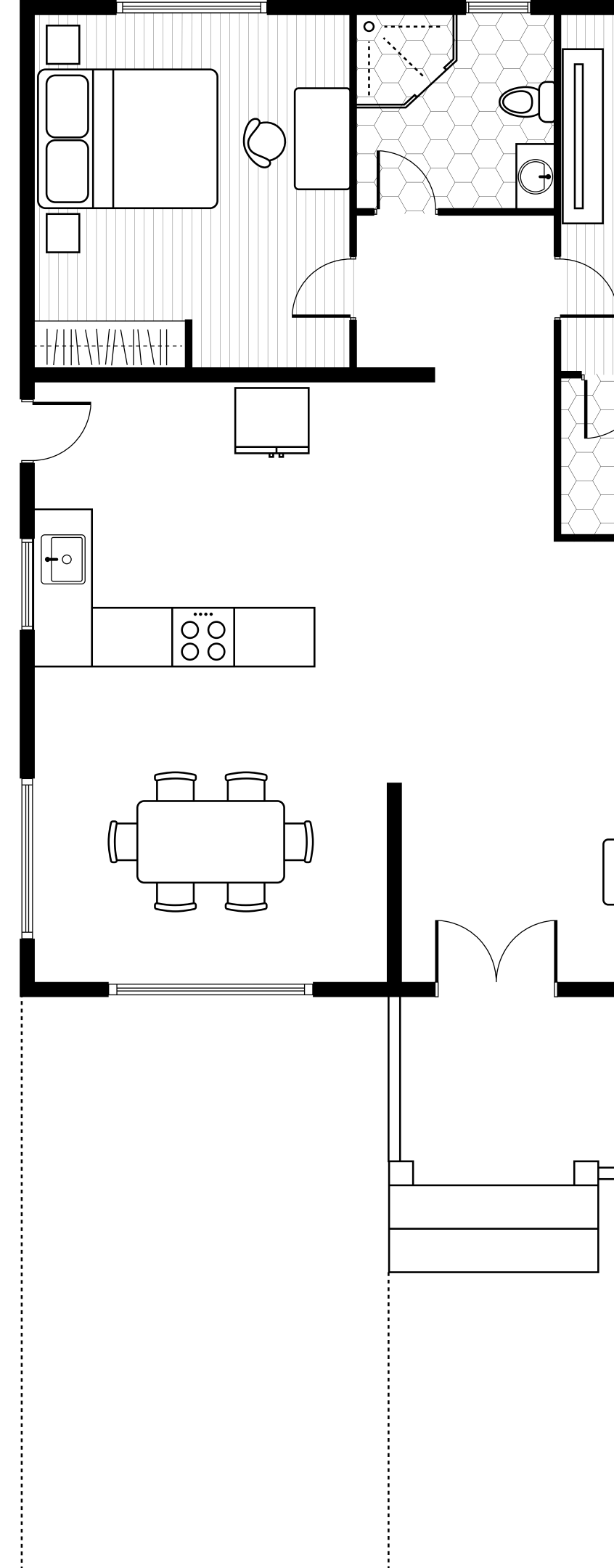


construction



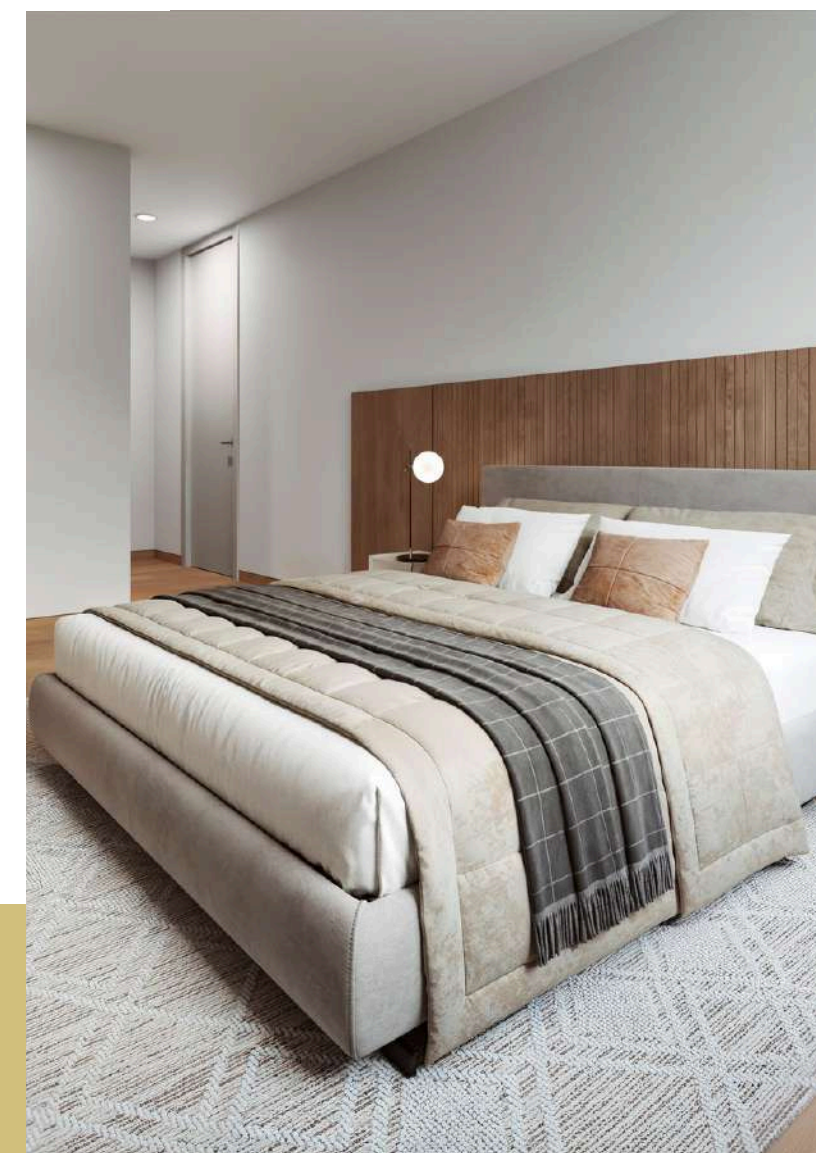
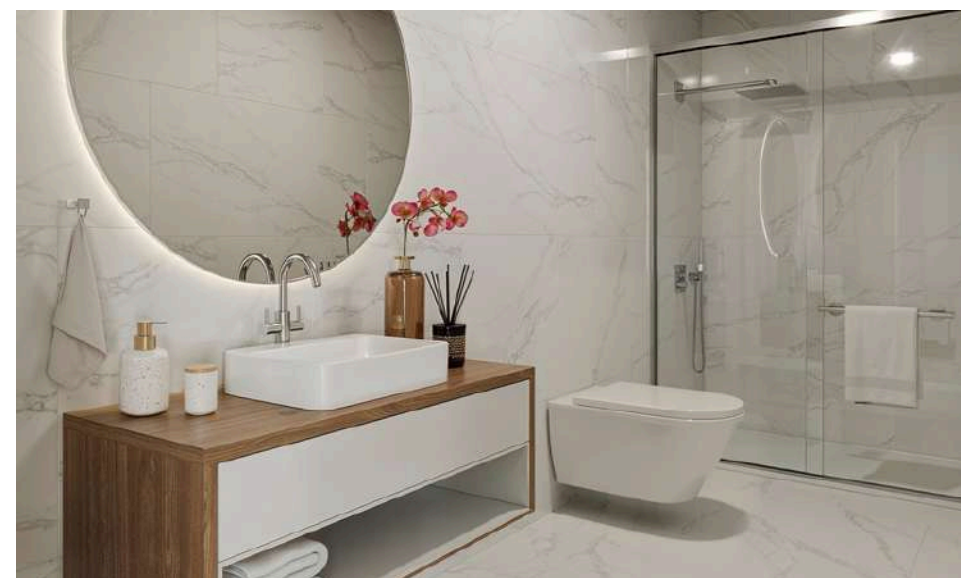
ADICIONA
DEVELOPMENTS

construímos e inovamos



GOLDEN *Residences*

BY GRATEROL SANTOS DEVELOPMENTS



São Bernardo offers everything you need: quality schools, supermarkets, parks and leisure areas.
Everything at your fingertips, in a safe and welcoming environment.

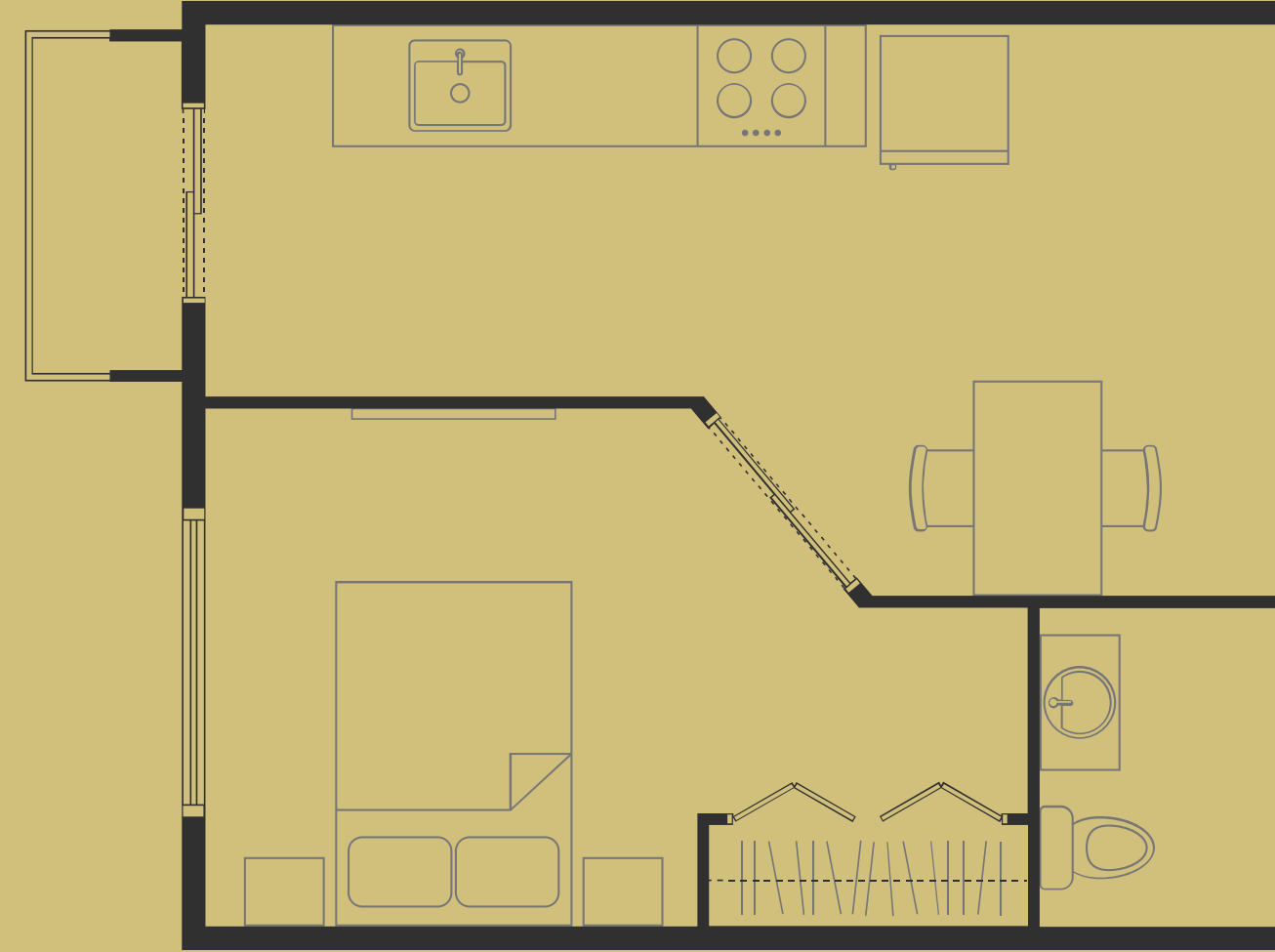


With the growing appreciation of the region, this is the perfect time to invest in an apartment in São Bernardo. A choice that not only guarantees quality of life, but also a promising future.

T1

From 100mt²

Rectified ceramics.
SANINDUSA toilets, sinks and remote controls.
BEKO equipment.
Heat pump, air conditioning and VMC system.
Garage.



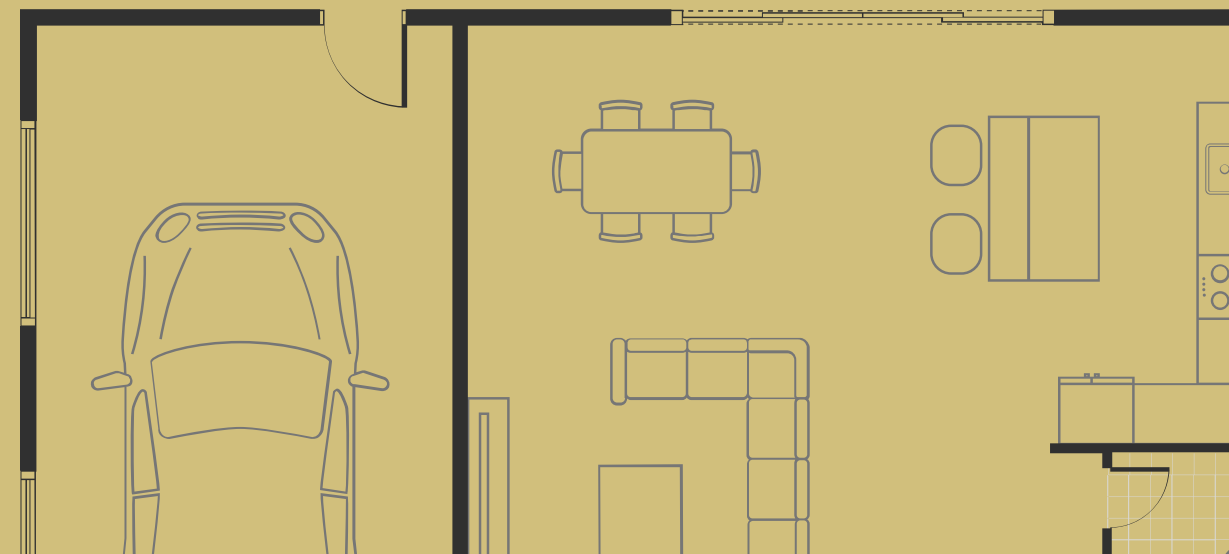




T2.

From 120mt²

Rectified ceramics.
SANINDUSA toilets, sinks and remote controls.
BEKO equipment.
Heat pump, air conditioning and VMC system.
Garage.






T3.

From 140mt²

Rectified ceramics.
SANINDUSA toilets, sinks and remote controls.
BEKO equipment.
Heat pump, air conditioning and VMC system.
Garage.



A modern apartment building with a yellow and grey facade. The building has balconies with metal railings. In the foreground, there is a courtyard with a paved area and a green lawn. The courtyard is furnished with white and brown outdoor furniture, including sofas, armchairs, and a dining table. There are also potted plants and a white pillar in the center of the courtyard. The text is overlaid on the image in a bold, black font.

ENJOY GREEN AREAS, COZY SPACES AND A PRIVILEGED LOCATION, WHICH COMBINES TRANQUILITY AND EASY ACCESS TO ALL THE CITY'S AMENITIES.



contact.



www.graterolsantos.com

geral@graterolsantos.com

234 036 997

