

PALACETE

Visconde de Santo Antônio

WWW.GRATEROLSANTOS.COM

AN EMBLEMATIC BUILDING COMES BACK TO LIFE

PALACETE VISCONDE DE SANTO ANTÓNIO

It is a building composed of ground floor, two floors and attic, located on the corner of Rua dos Combatentes da Grande Guerra (Rua Direita) and Rua do Dr. Nascimento Leitão (former Travessa das Laranjeiras) and was built at the beginning of the last century by Manuel de Moura Marinho.

It was used by the Civil Government when the district was created.

It was purchased by then Brigadeiro Pedro António Rebocho Freire de Andrade and Albuquerque, on July 10, 1842, for the sum of 1700\$000rs., to Francisco de Assis Marinho e Moura and his brother José António de Moura Marinho, from Viseu, sons Manuel de Moura Marinho.

AN EMBLEMATIC BUILDING COMES BACK TO LIFE

PEDRO ANTÓNIO REBOCHO

The 1st Viscount and 1st Baron of Santo António was Pedro António Rebocho Freire de Andrade and Albuquerque, Division General, Par do Reino, Member of the Supreme Council of Military Justice, Grand Cross of the Order of Avis, Knight of Conceição and the Torre e Espada, decorated with the Medal of the 5 Campaigns of the Peninsular War, with the Honor of the battles of Albuera, Victoria and Ortiz, with the Gold of Montevideo and that of the Campaigns of 1834.

Born in Almeida on March 1 from 1791, died on February 24, 1868, having married on June 4, 1826 with D. Ana Izequilina de Oliveira, sister of the 1st Baroness of Palme.

Visconde de Santo António's military career is by all accounts remarkable. Its value attests to the decorations awarded to it and the battles in which it participated, as well as the injuries received in them. In addition to the aforementioned battles, it is worth highlighting his participation in the liberal revolution of 1828, which earned him the death sentence. It saved him from this sentence that he emigrated to England.



AN EMBLEMATIC BUILDING COMES BACK TO LIFE

THE PROCESS

PLANNING

By Graterol & Santos LDA



DESIGNING

By Arq. Rui Rei



CONSTRUCTING

By Adiciona Developments



TYPOLOGIES



TO

From 32 m² to 40 m²

- Floor with noble wood cover (gray or oak).
- Rectified ceramics **RECER**.
- Toilets, shower trays, washbasins and controls **SANINDUSA**.
- Equipment **TEKA**.
- Apartments with air conditioning.

WWW.GRATEROLSANTOS.COM

TYPOLOGIES

T1

From 55 m² to 65 m²

- Floor with noble wood cover (gray or oak).
- Rectified ceramics **RECER**.
- Toilets, shower trays, washbasins and controls **SANINDUSA**.
- Equipment **TEKA**.
- Apartments with air conditioning.



TYPOLOGIES



T2

From 83 m² to 102 m²

- Floor with noble wood cover (gray or oak).
- Rectified ceramics **RECER**.
- Toilets, shower trays, washbasins and controls **SANINDUSA**.
- Equipment **TEKA**.
- Apartments with air conditioning.



TYPOLOGIES



T3

107 m² + 17 m² of balcony

- 2 parking spaces.
- Floor with noble wood cover (gray or oak).
- Rectified ceramics **RECER**.
- Toilets, shower trays, washbasins and controls **SANINDUSA**.
- Equipment **BOSCH**.
- Apartments with air conditioning.

TYPOLOGIES

150 m² + 10 m² of balcony

- 2 parking spaces.
- Floor with noble wood cover (gray or oak).
- Rectified ceramics **RECER**.
- Toilets, shower trays, washbasins and controls **SANINDUSA**.
- Equipment **BOSCH**.
- Apartments with air conditioning.



T3 DUPLEX



TYPOLOGIES

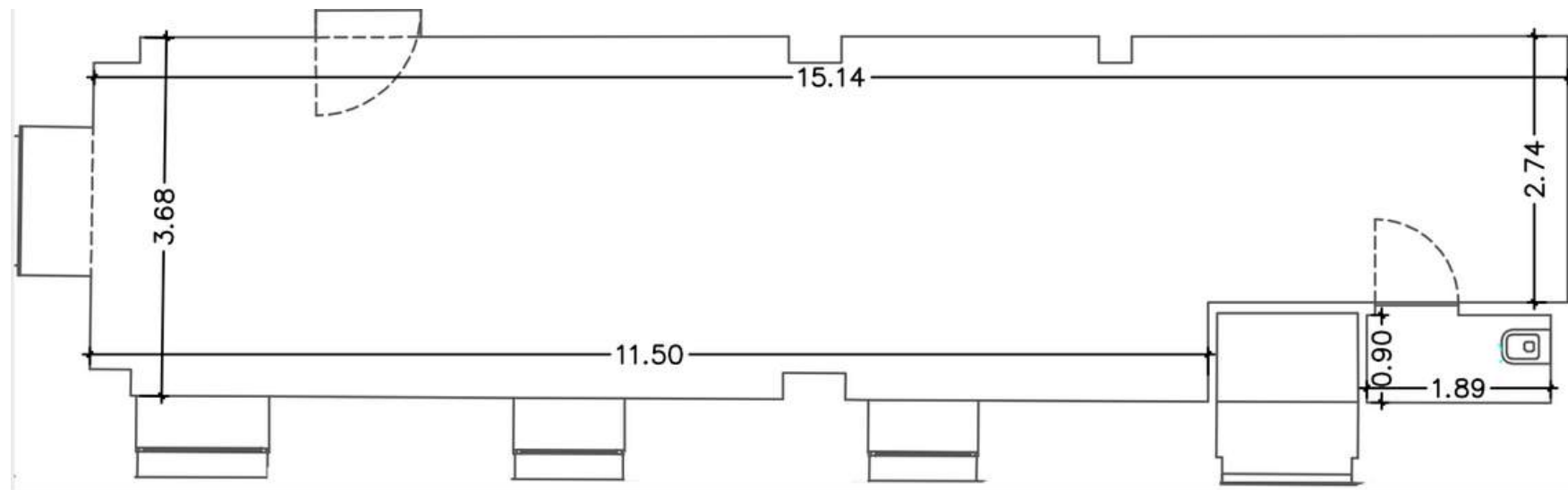
T4 DUPLEX

180 m² + 16 m² of terrace

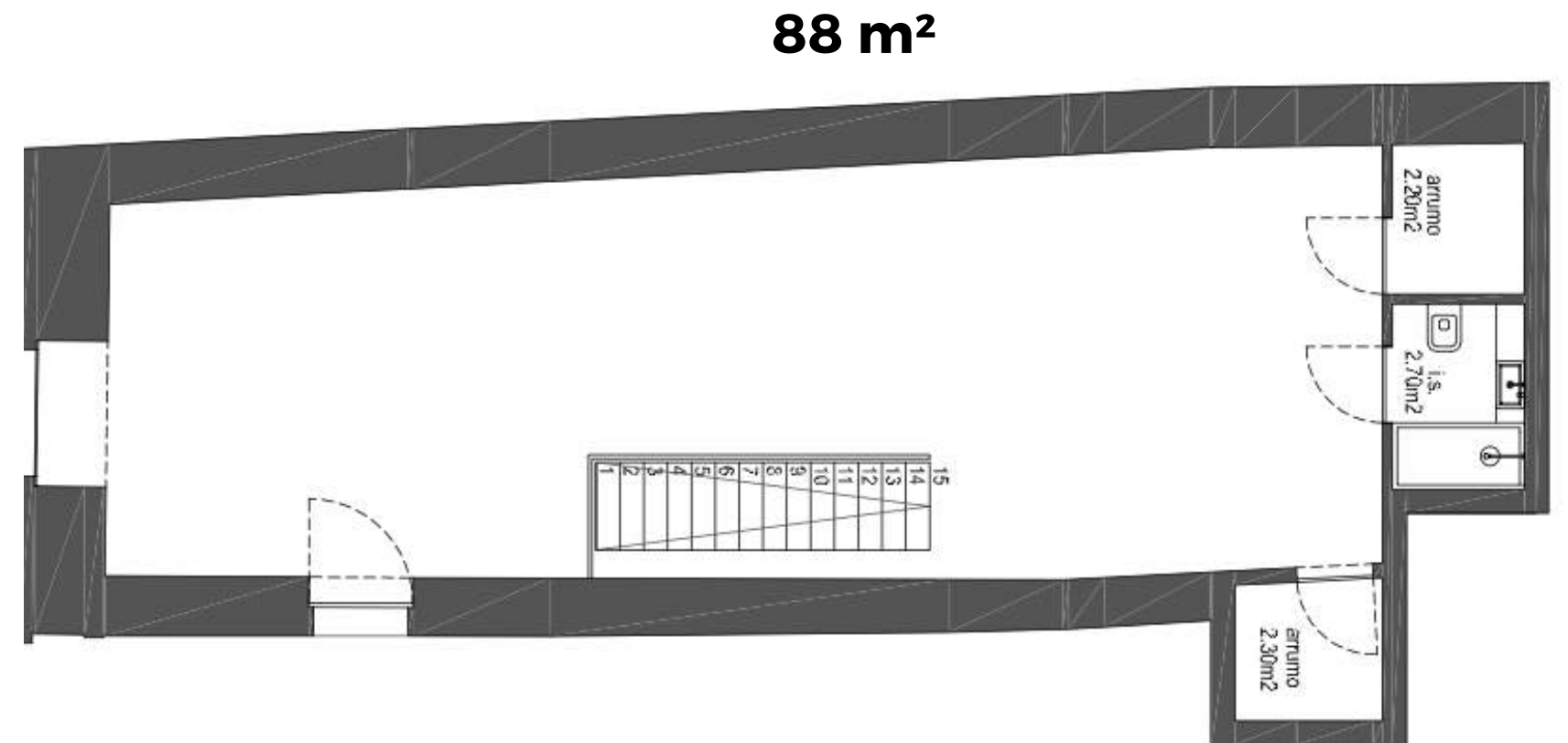
- 2 parking spaces.
- Floor with noble wood cover (gray or oak).
- Rectified ceramics **RECER**.
- Toilets, shower trays, washbasins and controls **SANINDUSA**.
- Equipment **BOSCH**.
- Apartments with air conditioning.



COMMERCIAL SPACES



82 m²



88 m²

Enabled for all types of enterprises

AN EMBLEMATIC BUILDING COMES BACK TO LIFE



18%

is the average percentage of all people that live in their DREAM HOME. Do you want to be part of this rating?


WWW.GRATEROLSANTOS.COM



IN 2023

One of the most emblematic buildings in the center of Aveiro, will be the home of our most ambitious clients. Apartments that fill every need of our costumers: singles, marriages, families.

WWW.GRATEROLSANTOS.COM

An architectural rendering of a multi-story building with a courtyard. The building is light-colored with many windows and a balcony on the left. The courtyard has benches, potted plants, and people walking. The text is overlaid on the left side of the image.

**IT IS NOT THE BEAUTY OF A
BUILDING YOU SHOULD LOOK
AT; IT'S THE CONSTRUCTION OF
THE FOUNDATION THAT WILL
STAND THE TEST OF TIME.**

David Allan Coe

WWW.GRATEROLSANTOS.COM

**THANK
YOU!**

WWW.GRATEROLSANTOS.COM